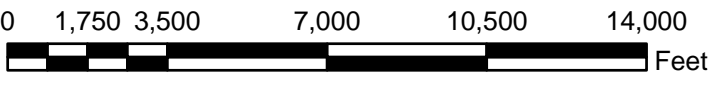
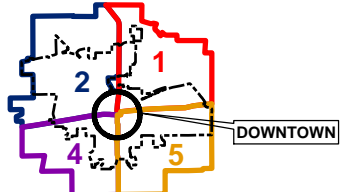
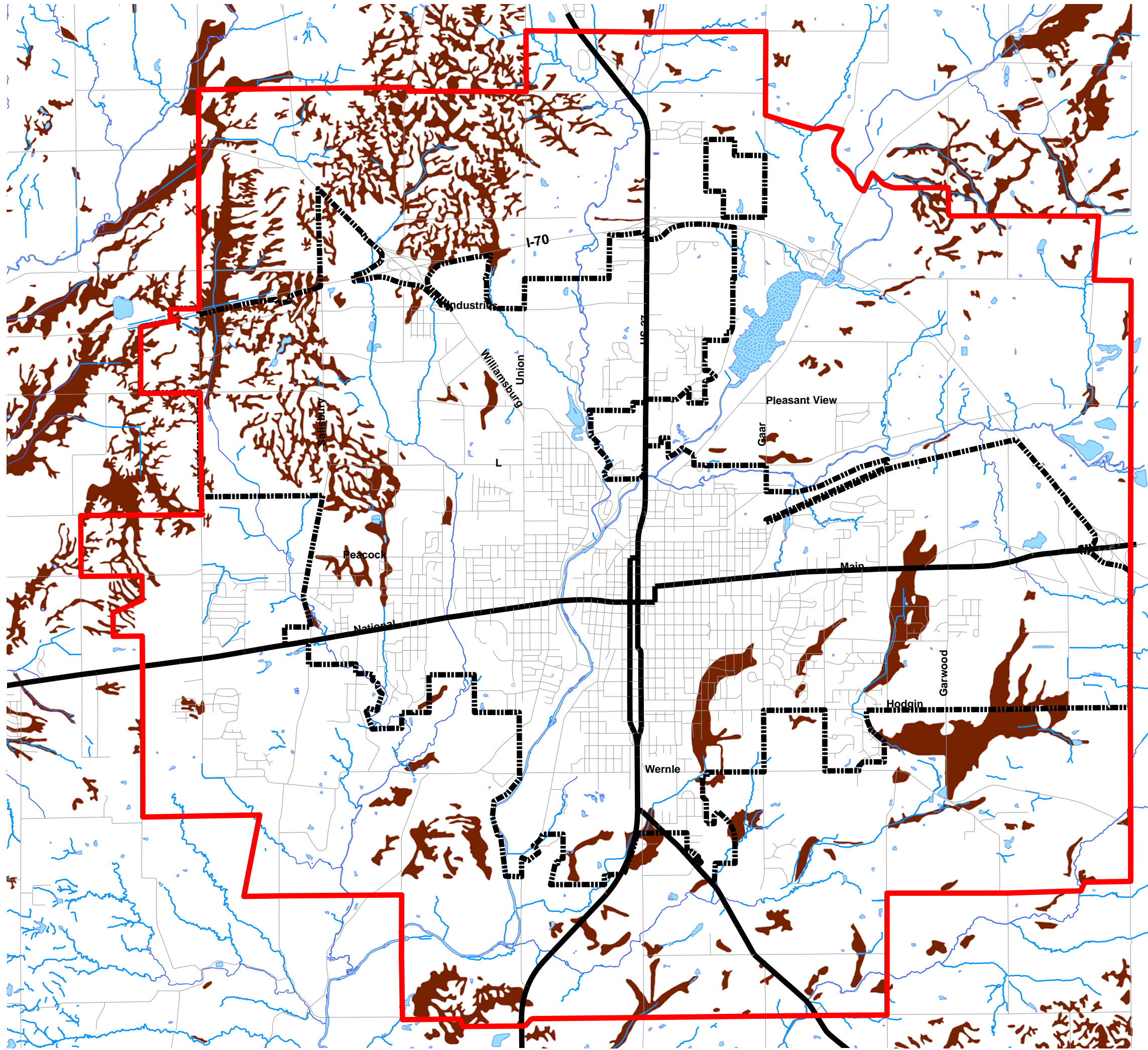


Hydric Soils

City of Richmond
Wayne County, IN

- Hydric Soils:**
- Ma - Mahalassville Silty Clay Loam
 - Ms - Millsdale Silty Clay Loam
 - Rc - Ragsdale Silty Clay Loam
 - Sn - Sloan Silty Clay Loam
 - Tr - Treaty Silty Clay Loam
 - We - Westland Silt Clay Loam



Data Sources:
Wayne County/City of Richmond Geographic Information System
Indiana Spatial Data Portal