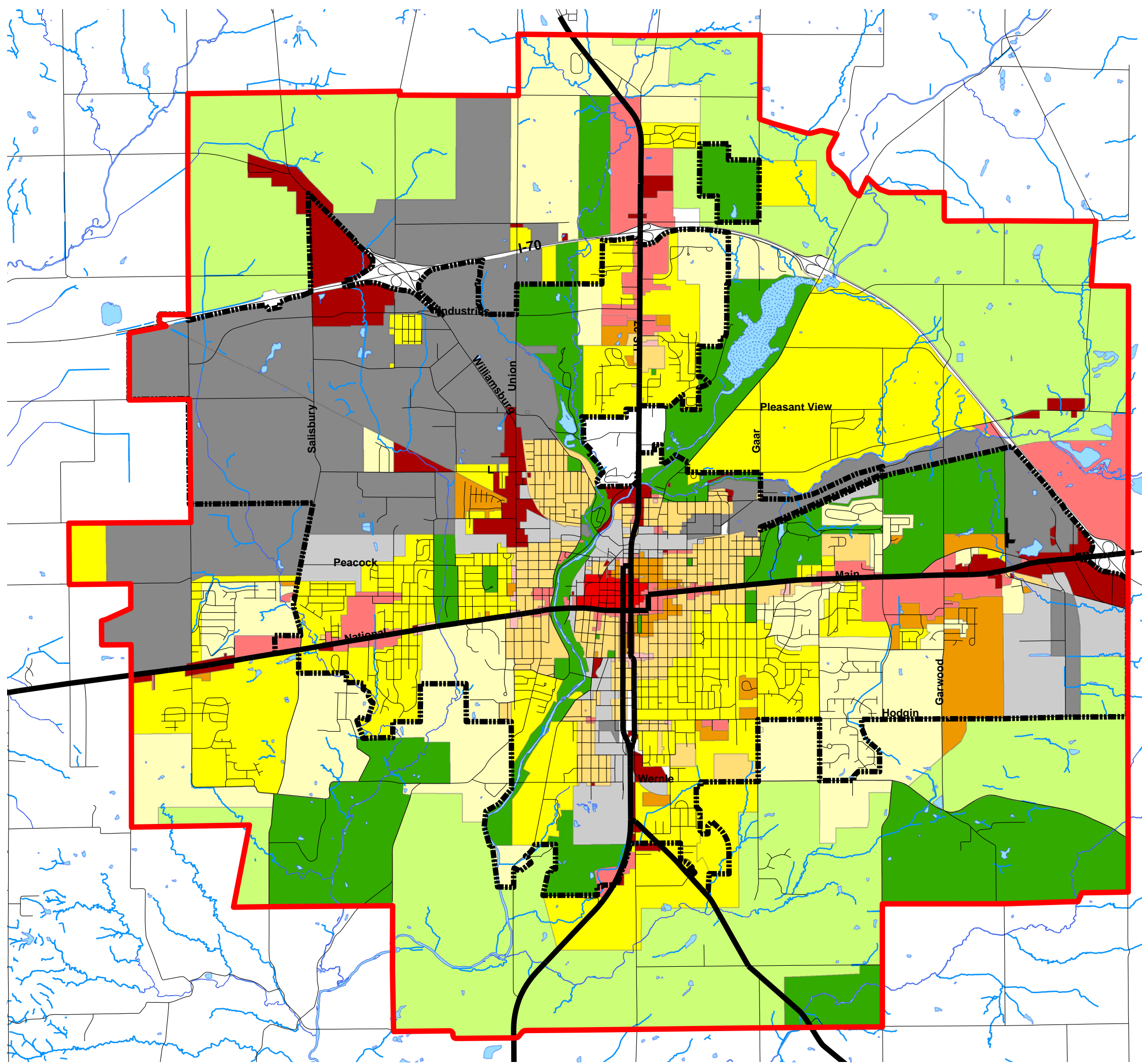
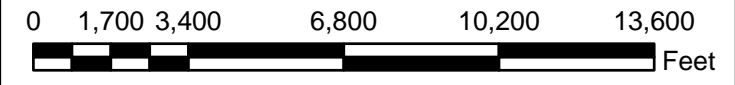
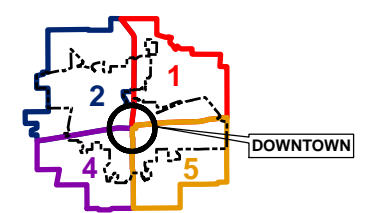


Zoning

City of Richmond Wayne County, IN



- A1, Agricultural District
- O1, Greenbelt District
- R1, One Family Residence District-Most Restrictive
- R2, One Family Residence District-Less Restrictive
- R3, One to Eight Family Residence District
- R4, Multi-Family Residence District
- C1, Limited Commercial District
- C2, Commercial District
- One Family Residence
- C3, Central Business District
- C4, General Business District
- M1, Light Industrial District
- M2, General Industrial District
- Change made per BGoodwin 6/6/02



Data Sources:
Wayne County/City of Richmond Geographic Information System
Indiana Spatial Data Portal